

38,000 Square Feet / Zoned Commercial

Fully Entitled for Conversion to 27 apartments and 6000 s.f. of Mixed Use

FOR SALE

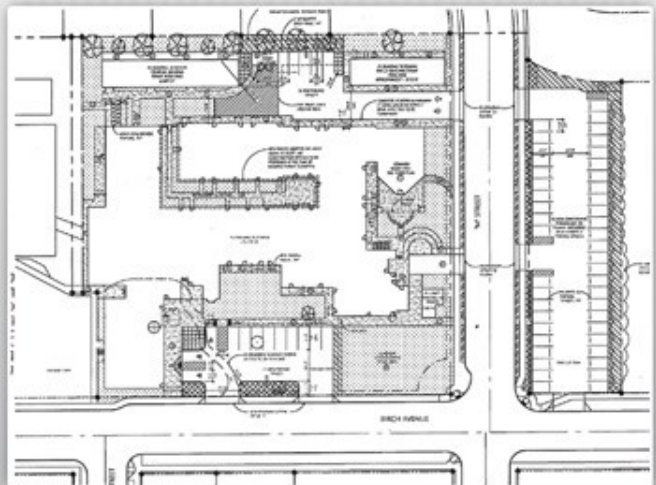
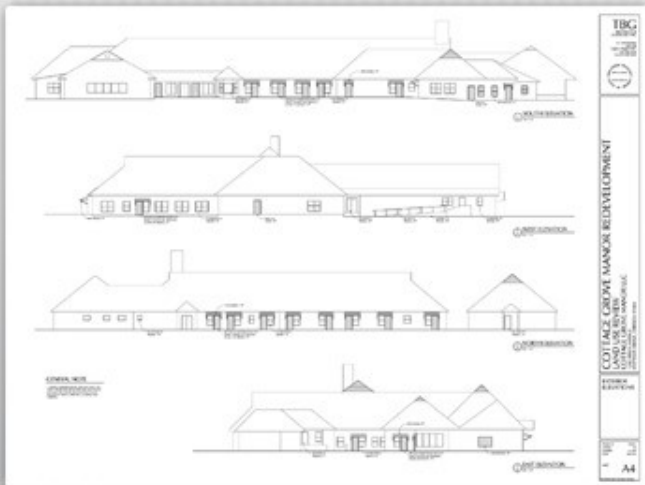
1340 Birch Street
Cottage Grove, Oregon



◆ 33,000 s.f. is in Former Cottage Grove Hospital & 5,000 s.f. in two other buildings.



Two Tax Lots included in Sale, Total 2.3 acres
Handi-cap access ◆ Exterior recently painted



READY FOR MAJOR REHAB. Project great for residential units, elderly housing, group home, church groups, gift shops, laundry site, offices, & so much more!



For more information...

Cynthia Howard Principal Broker

\$995,000

Cell | 541.554.8860
Office | 541.636.4580 ext 3
Email | CynHoward@yahoo.com



Key Realty Group, Inc.
Country Club Road, Suite B
Eugene, Oregon 97401